



Transport plans: City of Joburg 2010 Soccer World Cup

5 May 2010



City objectives in respect of the provision of transport for 2010 Soccer World Cup

- **Safe , reliable and efficient** public transport for duration of 2010 Fifa World Cup
- Ensuring that **local** and **national** transport connecting into or operating in Joburg are **fully operational** on match days and continue to operate for **four hours** after the games
- Ensuring a **positive public transport legacy** for the residents of the city.

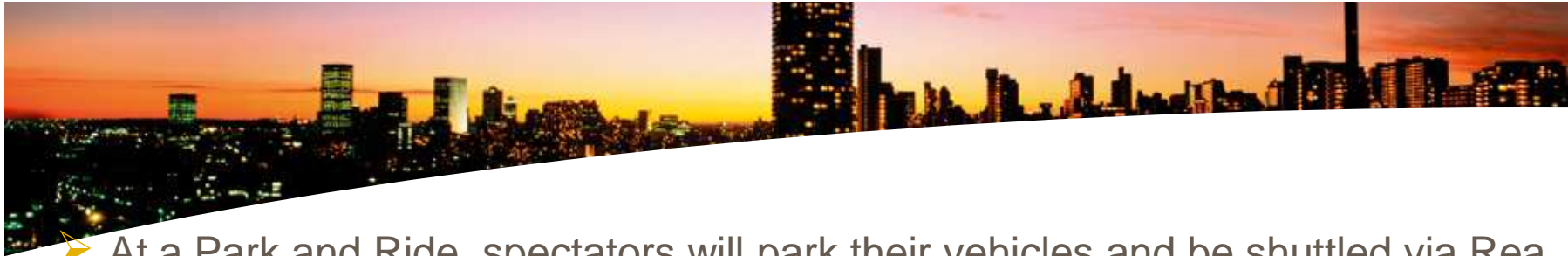


Our Plan for Match Days

- The following 'modes' will be used to transport spectators to stadiums on match days :
 - Rail (Metrorail, Shosholoza Meyl and Gautrain)
 - Park and Rides
 - Park and Walks
 - Rea Vaya BRT
- This will be supported by:
 - Two transport hubs (Sandton and Westgate) for inter modal transfers
 - Long distance buses which will bring passengers to the hubs
 - Metrobus which will run a service between Sandton and Westgate



Park and Rides



- At a Park and Ride, spectators will park their vehicles and be shuttled via Rea Vaya, MetroRail and Taxis to the Stadium
- The following are the Park and Ride facilities :

Facility	Capacity (vehicles)	Spectators	To
Wits Campus	3000	9000	Both stadiums
Constitutional Hill	1200	3600	Both stadiums
Gold Reef	1000	3000	Both stadiums
Bez Valley	2500	7500	Ellis Park only



Park and Walks



- At a Park and Walk spectators will park their vehicles and walk to the stadium
- The following are the Park and Walks facilities:

Facility	Capacity (vehicles)	Spectators	Venue
Shareworld	3000	9000	Soccer City
Randshow Road	1500	4500	Soccer City
Aeroton	2000	6000	Soccer City
Athlone Boys	2000	6000	Ellis Park



Payment for Park and Rides and Park and Walks



- Spectators who use Park and Ride and Park and Walk facilities will have to book and buy their tickets beforehand at www.ticketbreak.co.za:
 - **No ticket no entry principle**
 - Fares will be charged per vehicle not per person

Type of Vehicle	Amount
Sedan	R50
Minibus Taxi or similar	R100
35-40 Seater Bus	R500
64 Seater Bus	R700



Rea Vaya BRT



- Rea Vaya BRT to run a normal commuter service on non-match days and on match days spectators will be given priority.
- 20 000 spectators to be transported by Rea Vaya
- Cost R12.00 for a return ticket
- Spectators can catch the bus at any Rea Vaya stations



Rail (Metorail and Shosholoza Meyl)

- Normal MetroRail train service will run as scheduled during the SWC
- Additional train sets will also be added to 12 routes serving the SWC
- Additional train shuttles will run the following short routes between stadium's:
 - *Park Station – Nasrec*
 - *Westgate – Nasrec*
- MetroRail will be free of charge with a Match Ticket
- Shosholoza Meyl will run a long distance service to Park Station after which spectators can connect with a train shuttle to either Ellis Park or Soccer City Stadium.



Gautrain

- Gautrain will run from OR Tambo to Sandton station every day
- At Sandton, fans will be able to connect via Metrobus to Westgate and then to one of the Stadiums
- It will take 15 minutes to travel from OR Tambo International Airport to Sandton
- Gautrain feeder buses will be running from the Sandton Station to the surrounding suburbs.

Service	Peak Hours	Off-Peak hours	Weekends and Public Holidays
Trains	Every 12 Minutes	Every 20 Minutes	Every 30 Minutes
Buses	Every 12 Minutes	Every 20 Minutes	Every 30 Minutes

Sandton Metrobus Service



- On Match days, there will be Metrobuses starting from Innes Free Park, picking up fans in the Sandton area and dropping fans at the Westgate Transport Hub and visa versa
- From there, fans can transfer on to Metrorail or Rea Vaya BRT to the stadiums
- A one way trip to Westgate Transport Hub will cost R20.00.

Match Kick-Off	Bus start and end times
13H30	9H30 - 18H30
16H00	12H00 – 22H00
20H30	16H30 - 02h30



Westgate Transport Hub

- Will act as a public transport interchange and operate on match and non-match days for spectators to go to stadiums via Rea Vaya or Metrorail who are:
 - Being dropped-off (Drop and Ride)
 - Coming by bus or mini-bus taxi from:
 - Sandton (with Metrobus service)
 - OR Tambo International Airport (inter city commercial transport service called GauTransie)
 - Polokwane, Bloemfontein, Nelspruit or Rustenburg (NDOT arranged commercial service)



Sandton Transport Hub

- At different places in the Sandton area there will be pick up and drop off points for:
 - Gautrain Feeder Buses (pick up at Sandton Gautrain Station)
 - Gautrain (from OR Tambo International Airport)
 - Metrobus Service to Westgate via Innes Free Park
 - Sandton – Lanseria (GauTransie)
 - Sandton – Pretoria (GauTransie)



Message to spectators



- To **spectators and ticket holders**, please **plan** how you are going to get to and from the stadium **well in advance**. If you are going to use a Park and Ride or Park and Walk, you will need to **purchase a ticket beforehand**.
- Please use the public transport on offer and **do not just attempt to drive to the stadiums...**you will be frustrated.
- All drivers will **be trained** and all **vehicles** will have **the necessary licenses**.
- There is **visible signage**
- On match days give yourself **enough time** to get to the stadiums or the pick up or transfer points!



Signage to direct spectators to all key match venues

- The Johannesburg Roads Agency has put up directional and tourism signage through out the City of Joburg.
- Large brightly coloured signage has already been placed around the City in anticipation of the 2010 FIFA World Cup
- For example:



Call Center and Website Information



- **City's 2010 Hotline** 0860 333 999 www.joburg.org.za
- **Ndot** 012 309 3657 www.joburgtourism.co.za/fifaworldcup
- **Rea Vaya BRT** 011 375 5555 www.findyourway.co.za
- **Metrobus** 011 375 5555 www.gauteng.net
- **Metrorail** 011 773 5878 www.fifa.com
- **Gautrain** 0800 428 87246 <http://nasp.dot.gov.za>
- **Shosholoza Meyl** 0860 000 8888